

To: 3GPP S3 LI

Date: January, 16 2001

From: Motorola

Topic: Informative Call flows

This document proposes a series of informational session flows to be added to TS 33.107 for multi-media service as part of a new informative annex. The calls flows are based upon TS 23.228 V 1.5.0 dated 2000-12.

-

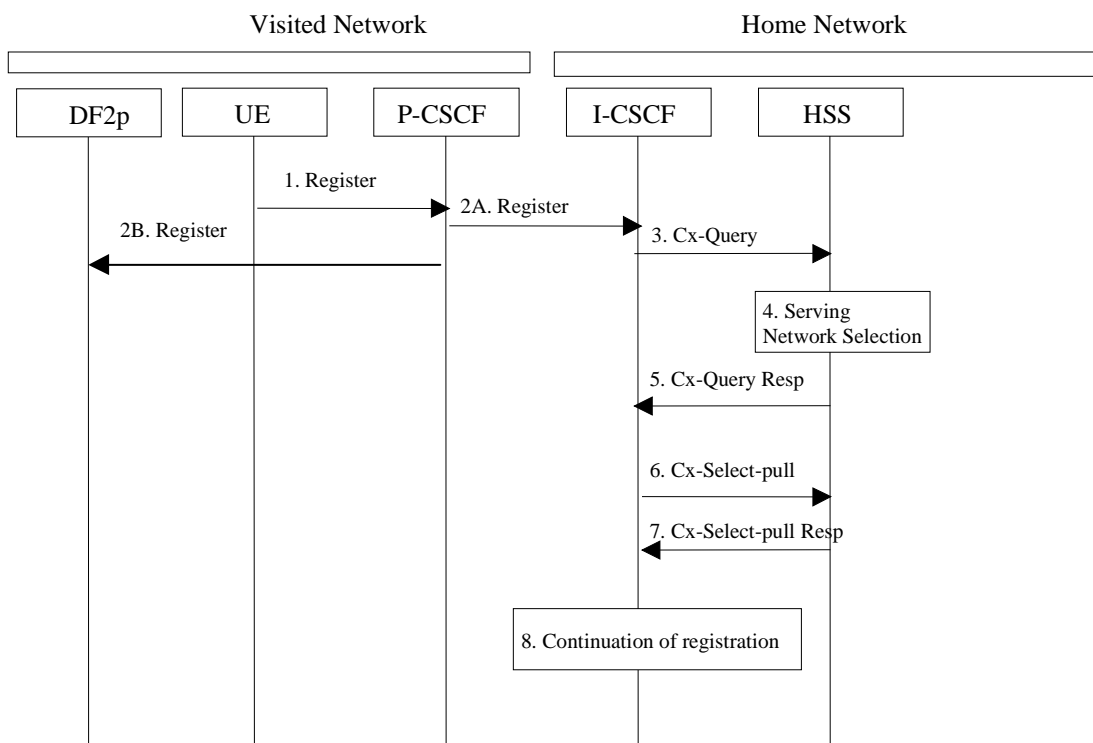
## Annex C (informative): Information flows for Lawful Interception invocation of Packet Data services with Multimedia.

The following figures show the information flows for the invocation of Lawful Interception for Packet Data with multimedia. The figures show some of the basic signalling messages of the target Packet Data communication and the events on the X2P interfaces. The dotted lines indicate signalling depending on whether IRI information has been requested.

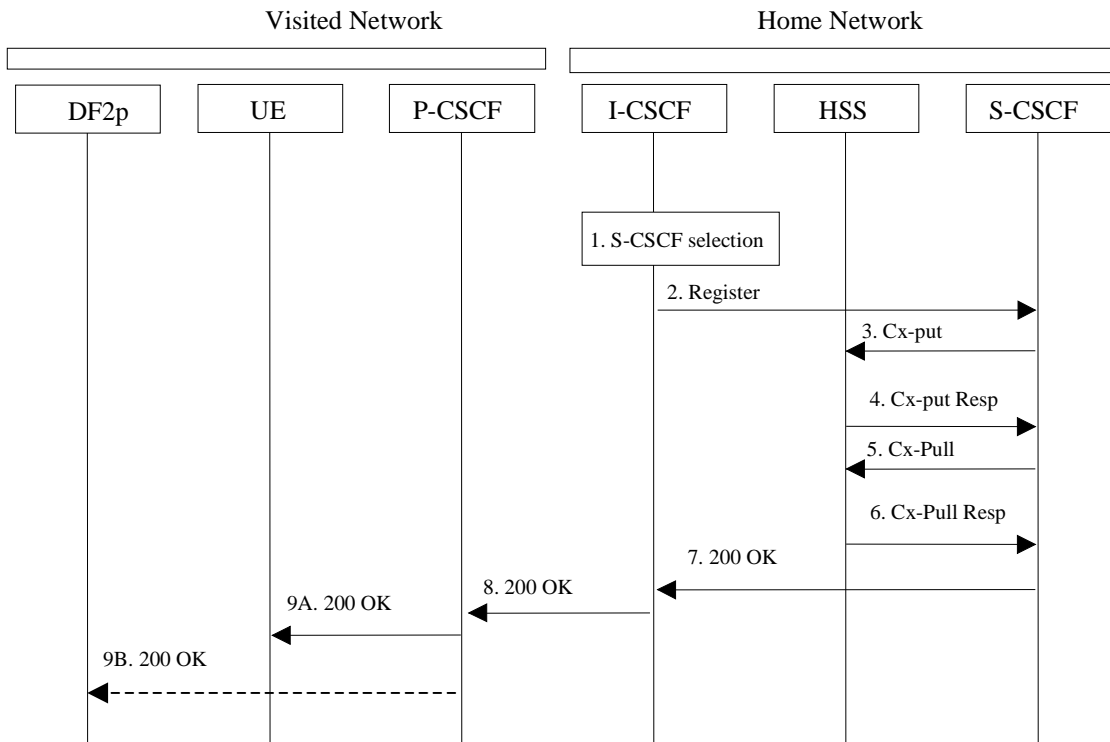
The figures illustrate interception in the visited network, as interception within the home network is a national option.

### C.1 Multimedia Registration

Figures C1.1 and C1.2 show the intercept of the Multimedia registration for the case that the home provides the S-CSCF (A). (Refer to 3G TS 23.228 section 5.3.2.4 and 5.3.2.5)



**Figure C1.1: Intercept of Start of Multimedia Registration**



**Figure C1.2: Intercept of Continuation of Multimedia Registration – S CSCF in visited network**

Note: The same SIP Registration command is used for the initial registration and any registration updates. Registration deletion request is accomplished with a Registration command that indicates a '\*' contact or zero expiration time.

## C.2 Multimedia Session Establishment and Answer with Home Control

Figure C2 shows the intercept of the Multimedia Establishment and Answer for the case of home network service control for the visiting target mobile (A). (Refer to 3G TS 23.228 section 5.7.1)

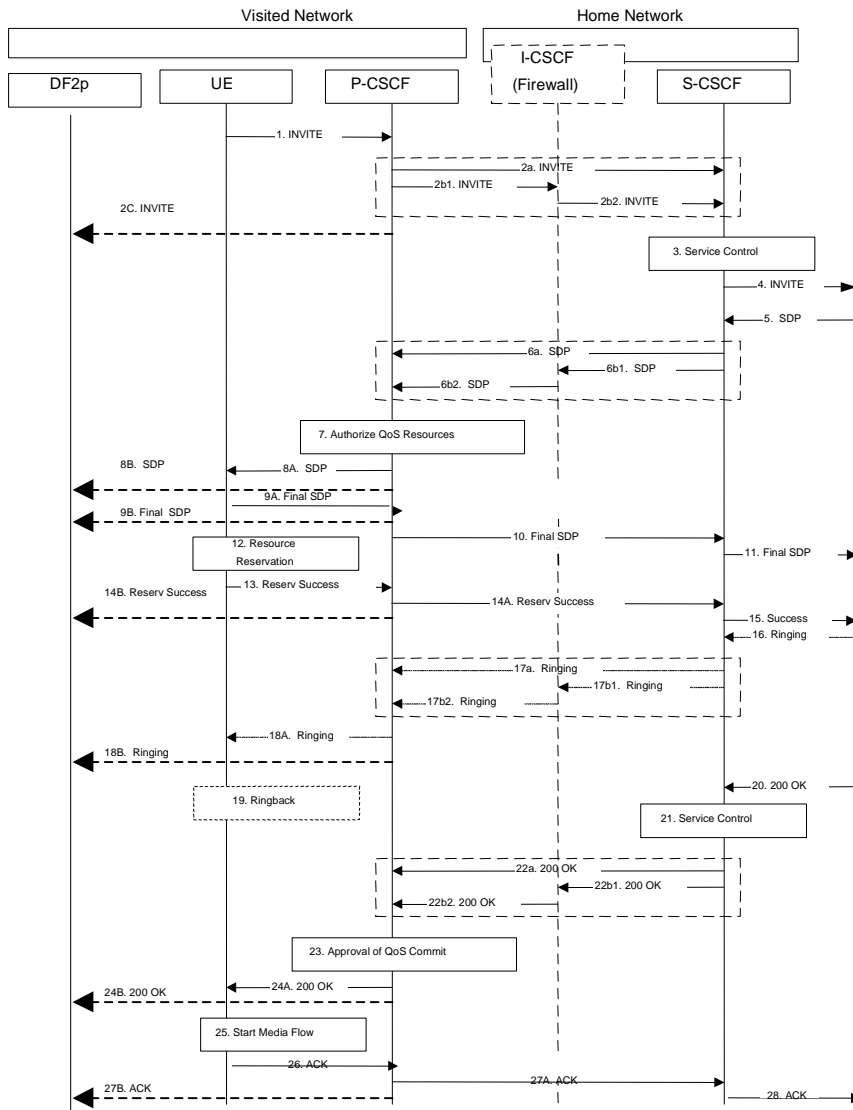


Figure C2 Intercept of Multimedia Establishment and Answer at Visiting Network

## C.3 Multimedia Release with Home Control

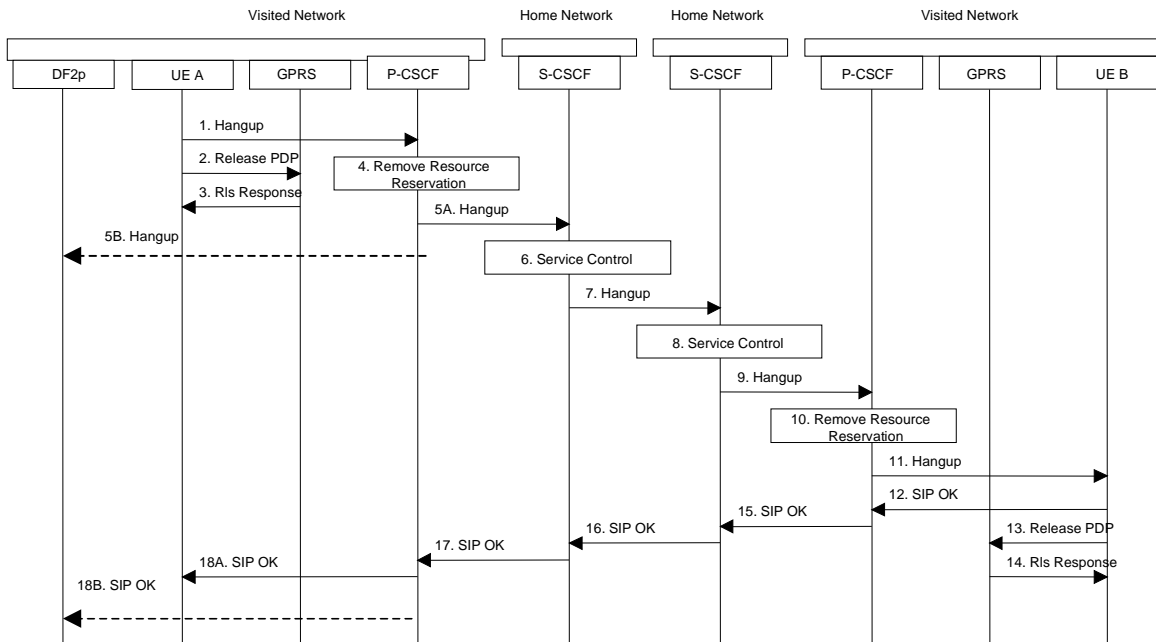


Figure C3 shows the intercept of the Multimedia Release for the case of home network service control for the visiting target mobile (A). (3G TS 23.228 para C.2.1 reference available)

**Figure C3 Intercept of Multimedia Release at Visiting Network**

---

## C.4 Multimedia with Supplementary Service – Call Forwarding

[Editors note: Topic for further study as S2 has not yet agreed upon subscriber service flow for call forwarding.]

---

## C.5 Multimedia with Supplementary Service – Explicit Call Transfer

[Editors note: Topic for further study as S2 has not yet agreed upon subscriber service flow for explicit call transfer.]

---

## C.6 Multimedia with Supplementary Service – Subscriber Controlled input

[Editors note: Topic for further study as S2 has not yet agreed upon subscriber service flow for SCI.]